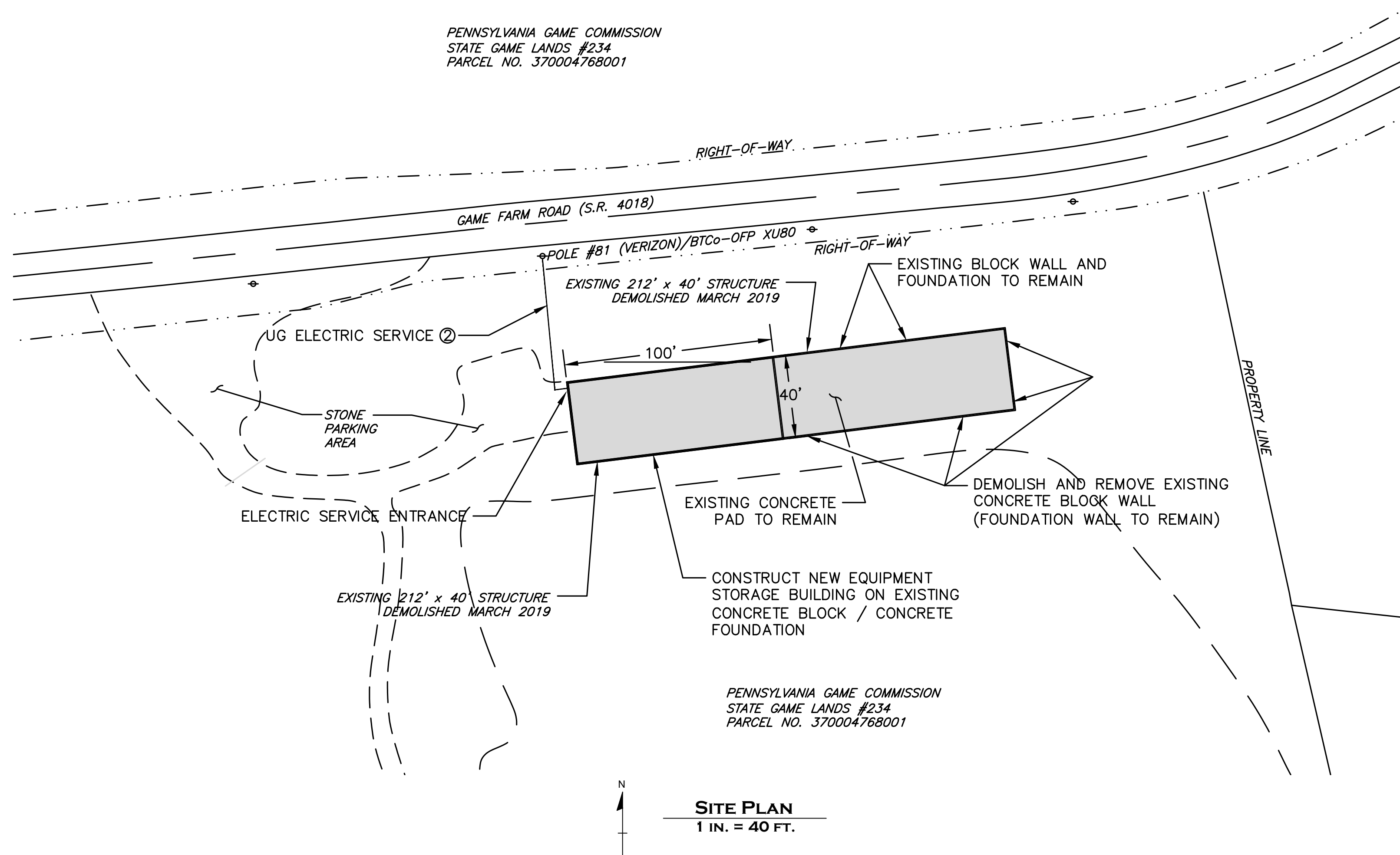


PENNSYLVANIA GAME COMMISSION
STATE GAME LANDS #234
PARCEL NO. 370004768001

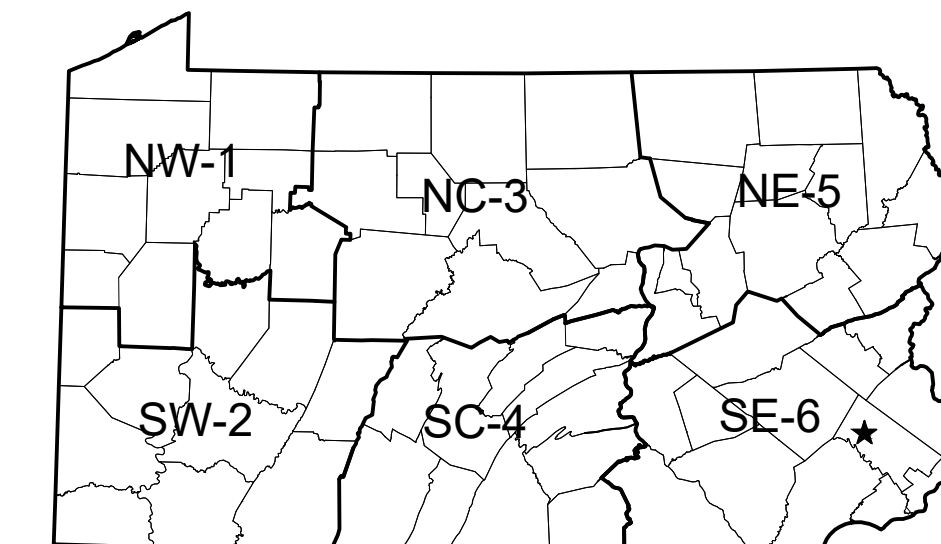


SITE PLAN
1 IN. = 40 FT.

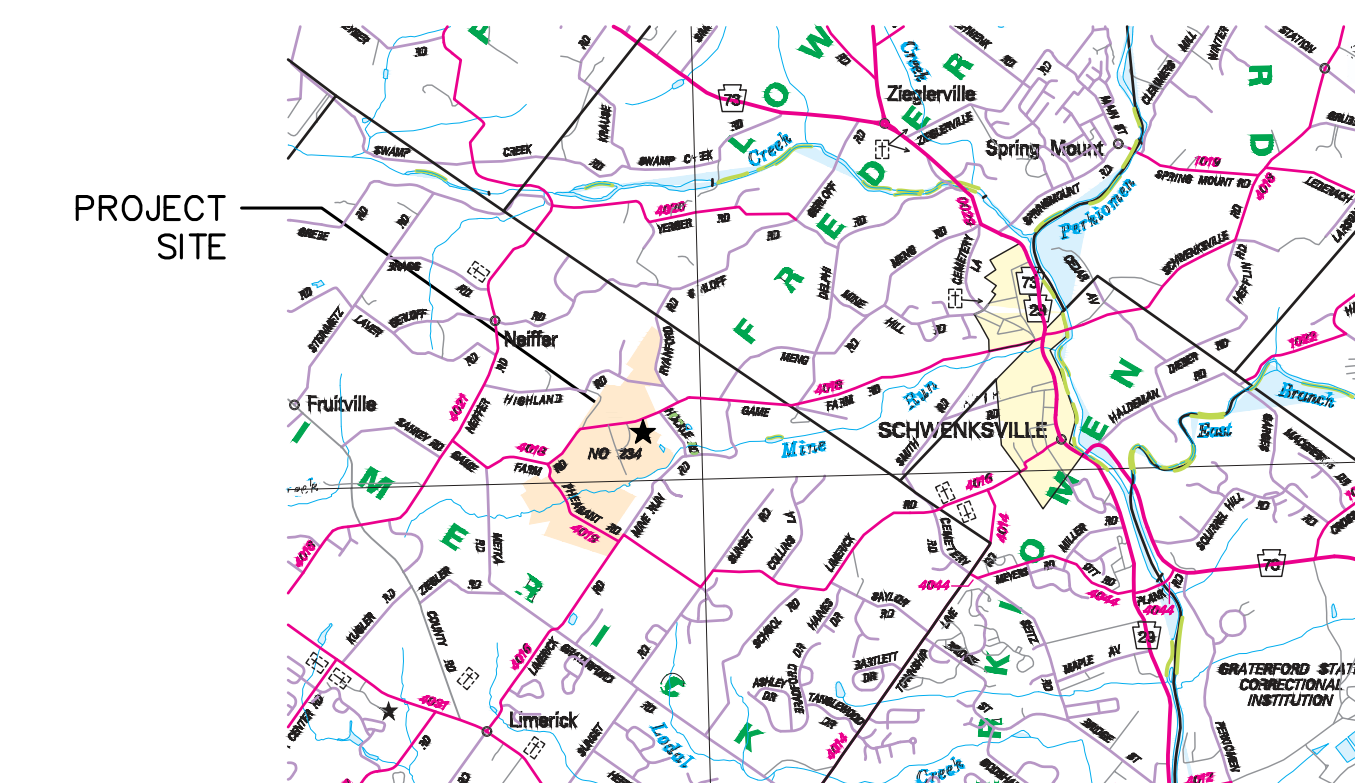
PENNSYLVANIA GAME COMMISSION
STATE GAME LANDS #234
PARCEL NO. 370004768001

DRAWING INDEX

- SHEET NO. 1 OF 5 PLAN
- SHEET NO. 2 OF 5 ELEVATIONS
- SHEET NO. 3 OF 5 FRAMING DETAILS
- SHEET NO. 4 OF 5 FRAMING DETAILS
- SHEET NO. 5 OF 5 ELECTRICAL



★ = GEO N40.254496°/-75.506261°W



LOCATION MAP
NOT TO SCALE

CONSTRUCTION OF EQUIPMENT STORAGE BUILDING ON STATE GAME LANDS #234 LOCATED AT 291 GAME FARM ROAD, SCHWENKSVILLE, PA 19473 IN LIMERICK TOWNSHIP, MONTGOMERY COUNTY.

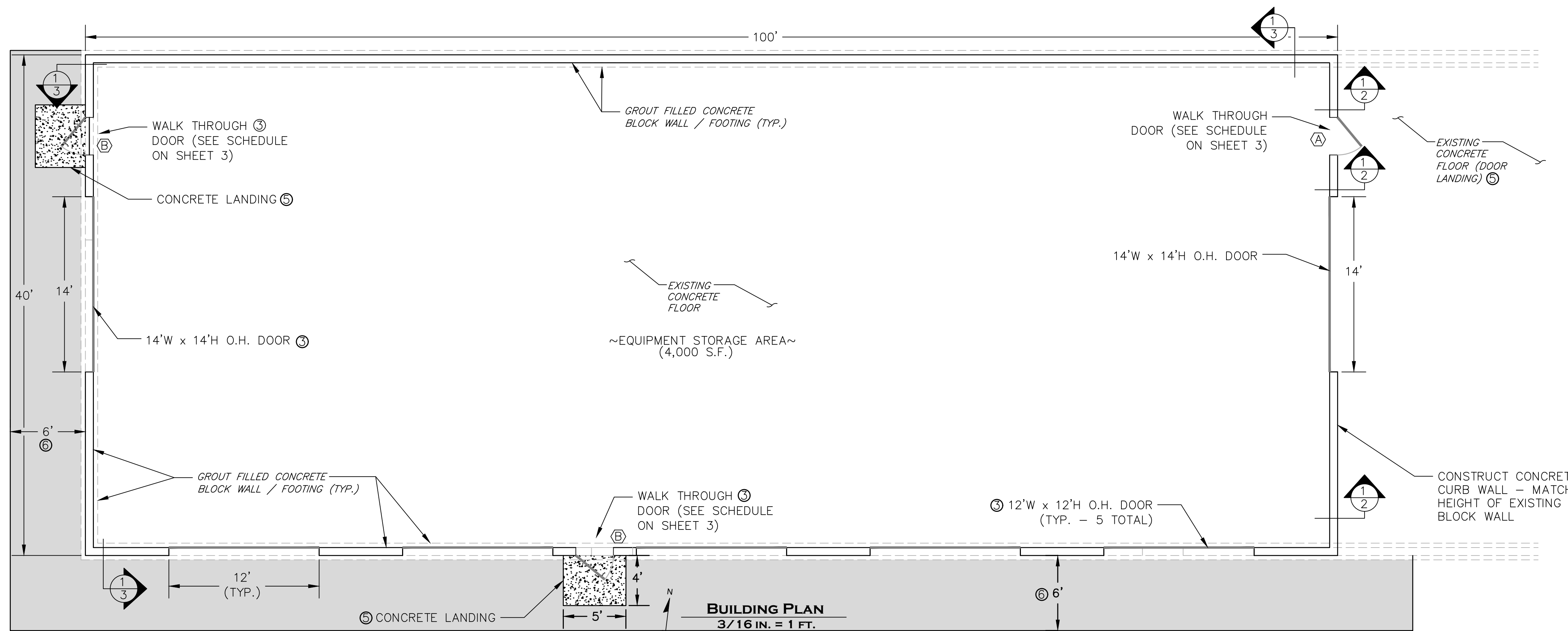
SITE IS LOCATED APPROXIMATELY 2.25 MILES WEST OF SCHWENKSVILLE, PA IN LIMERICK TWP., MONTGOMERY COUNTY

APPROXIMATE DISTANCES FROM BUILDING TO PROPERTY LINE:

- NORTH 52 FT. (ROAD R/W)
- SOUTH 1300 FT.
- EAST 219 FT.
- WEST 1700 FT.

CODE	CHAP.	DESCRIPTION
3		USE AND OCCUPANCY CLASSIFICATION: 311.2 MODERATE HAZARD STORAGE, GROUP S-1
6		TYPE OF CONSTRUCTION: TABLE 601 TYPE V.B.
10		MEANS OF EGRESS: TABLE 1004.1.2 MAX FLOOR AREA PER OCCUPANT GROUP, OCC. FACTOR 300 GROSS, S.F. 4,000 STORAGE
13		ENERGY EFFICIENCY: IECC CHAP. 4, C402.1.1 EXEMPTION (LOW ENERGY BUILDING - SPACE NOT CONDITIONED)

**SEE SHEET 3 FOR DESIGN LOADING INFORMATION.



BUILDING PLAN
3/16 IN. = 1 FT.

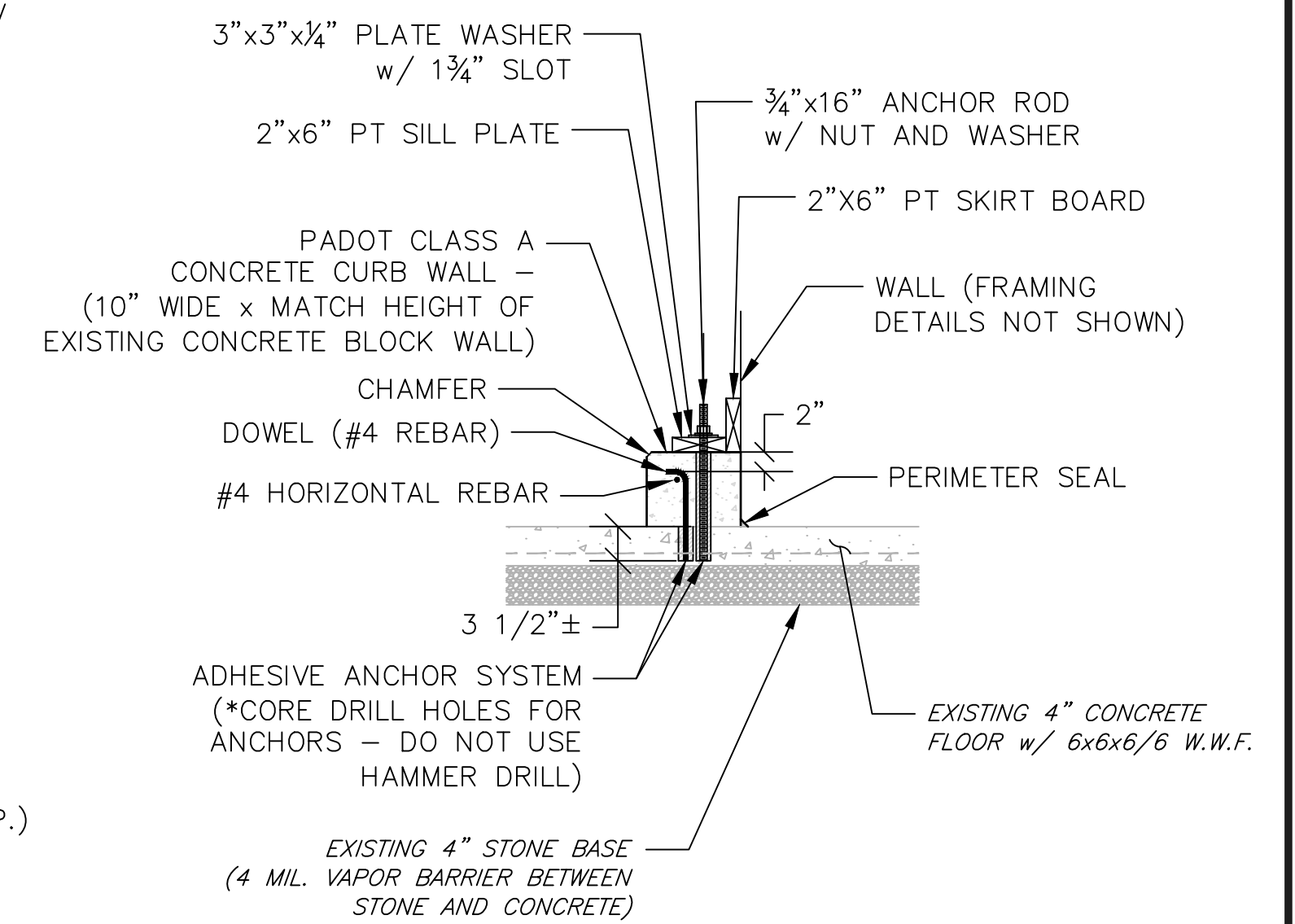
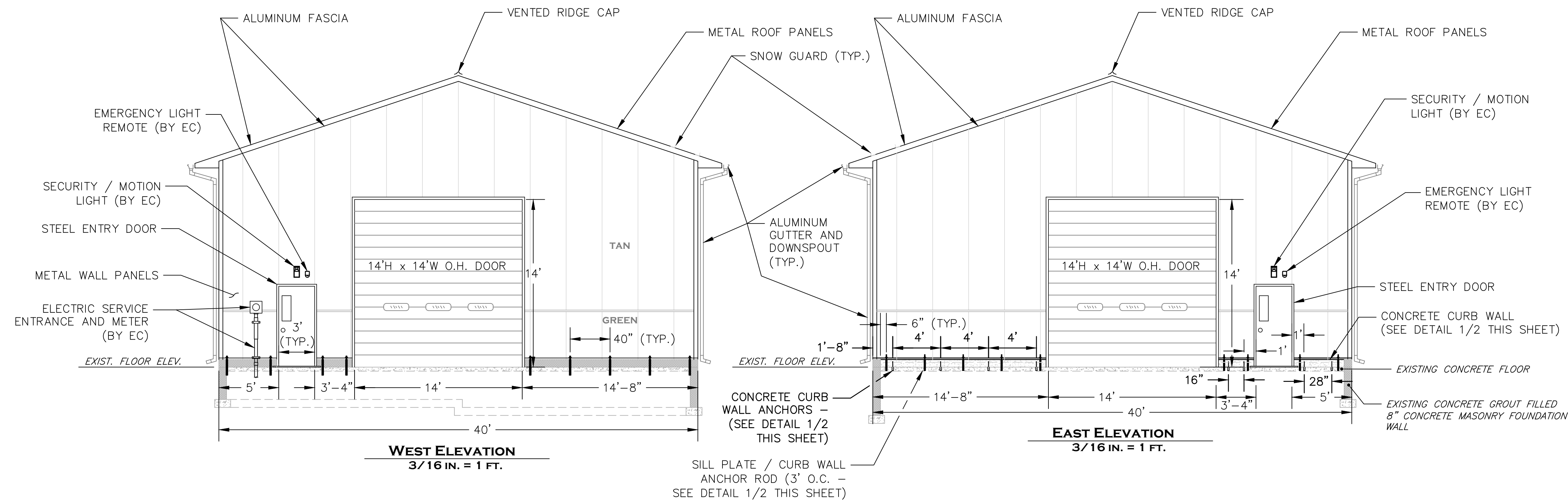
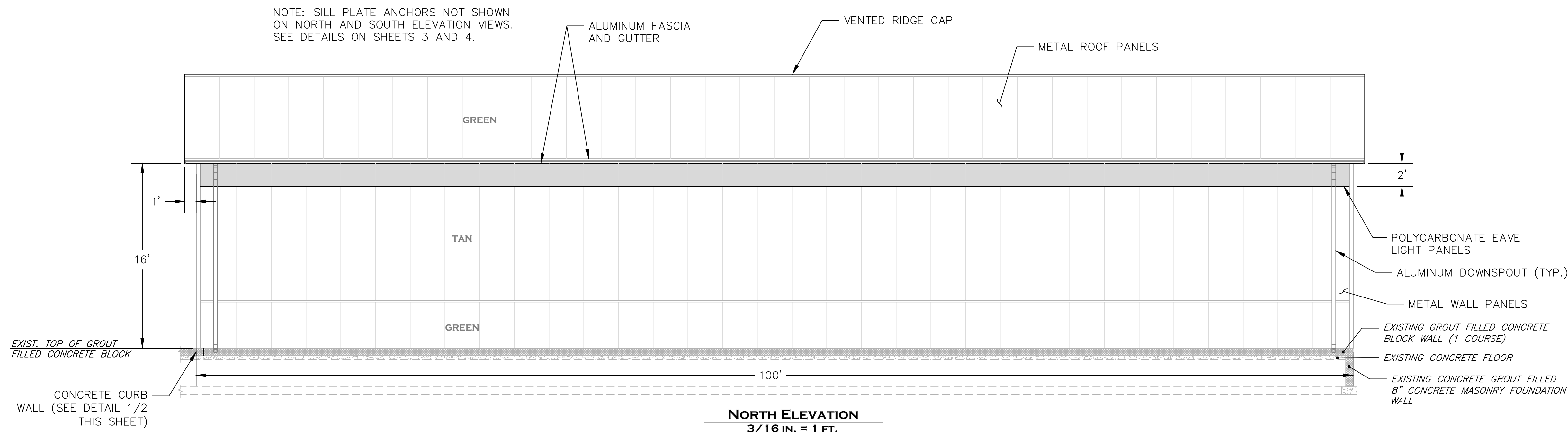
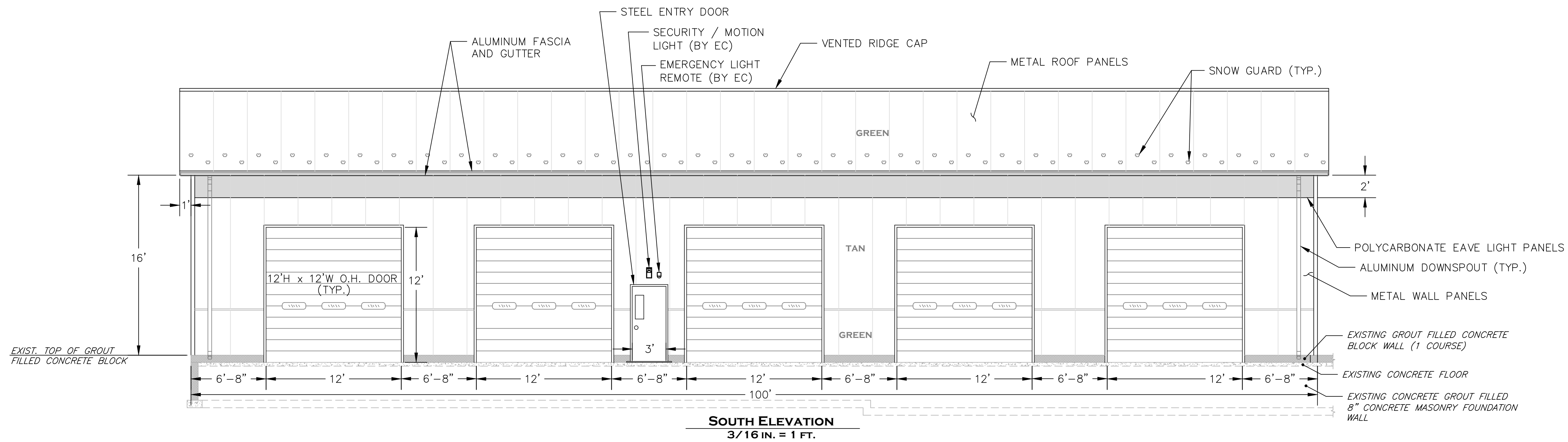
DRAWING NOTES:

1. UNLESS NOTED OTHERWISE, ALL WORK THIS SHEET SHALL BE THE RESPONSIBILITY OF AND PROVIDED BY THE GENERAL CONTRACTOR (GC).
2. ELECTRICAL CONTRACTOR (EC) - PROVIDE UNDERGROUND ELECTRIC SERVICE TO NEW BUILDING IN ACCORDANCE WITH NEC AND PECO REQUIREMENTS. PROVIDE NEW CONDUIT AND CONDUCTORS FROM UTILITY POLE TO BUILDING. SEE DRAWING NO. 5 FOR ELECTRICAL DETAILS [PREVIOUS SERVICE DISCONNECTED WHEN FORMER STORAGE BUILDING WAS DEMOLISHED IN MARCH 2019].
3. CUT OUT AND REMOVE EXISTING CONCRETE BLOCK WALL FLUSH WITH THE SURFACE OF EXISTING CONCRETE FLOOR AS REQUIRED FOR CONSTRUCTION OF STORAGE BUILDING AND INSTALLATION OF DOORWAYS AND GARAGE DOORS. PATCH CONCRETE TO FILL CRACKS, JOINTS, AND DEPRESSIONS AS REQUIRED TO PROVIDE SMOOTH CONCRETE SURFACE WHERE BLOCKS WERE REMOVED.
4. PROVIDE CONCRETE CURB WALL AS REQUIRED TO FILL EXISTING OPENINGS IN CONCRETE MASONRY WALL WHERE PREVIOUS DOORWAYS WERE LOCATED.
5. PROVIDE 4' x 5' CONCRETE LANDINGS AT SOUTH AND WEST WALL ENTRANCE DOORWAYS. LANDINGS SHALL BE AT THE SAME ELEVATION ON EACH SIDE OF THE DOORWAY. LANDING SHALL BE 4" THICK PENNDOT CLASS A CONCRETE WITH LIGHT BROOM FINISH. EXTERIOR LANDING SLOPE SHALL NOT EXCEED 2% (0.25 UNITS VERTICAL IN 12 UNITS HORIZONTAL). (NOTE: EAST DOORWAY OPENS TO EXISTING CONCRETE FLOOR - NEW LANDING NOT REQUIRED.)
6. STRIP EXISTING TOP SOIL/SOIL LAYER ALONG SOUTH AND WEST WALLS. PROVIDE 4" OF COMPACTED 2A COARSE AGGREGATE LEVEL WITH SURFACE OF CONCRETE DOOR LANDINGS AND EXISTING CONCRETE FLOOR.

Pennsylvania One Call System, Inc.
Call 3 Business Days Before You Dig!
1-800-242-1776 or 8-1-1
POCS Serial No.: 20191162185

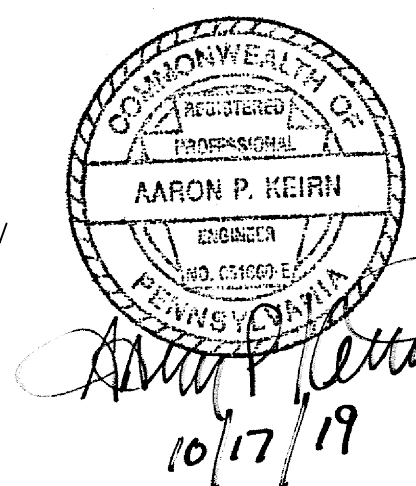


PENNSYLVANIA GAME COMMISSION		
STATE GAME LANDS # 234	LIMERICK TWP.	MONTGOMERY CO.
EQUIPMENT STORAGE BUILDING		
PLAN		
REVISIONS	PROJECT NO.	PGC-234-19-02
	DRAWN BY:	A. KEIRN
	DATE:	10/17/19
	SHEET NO.	1 OF 5

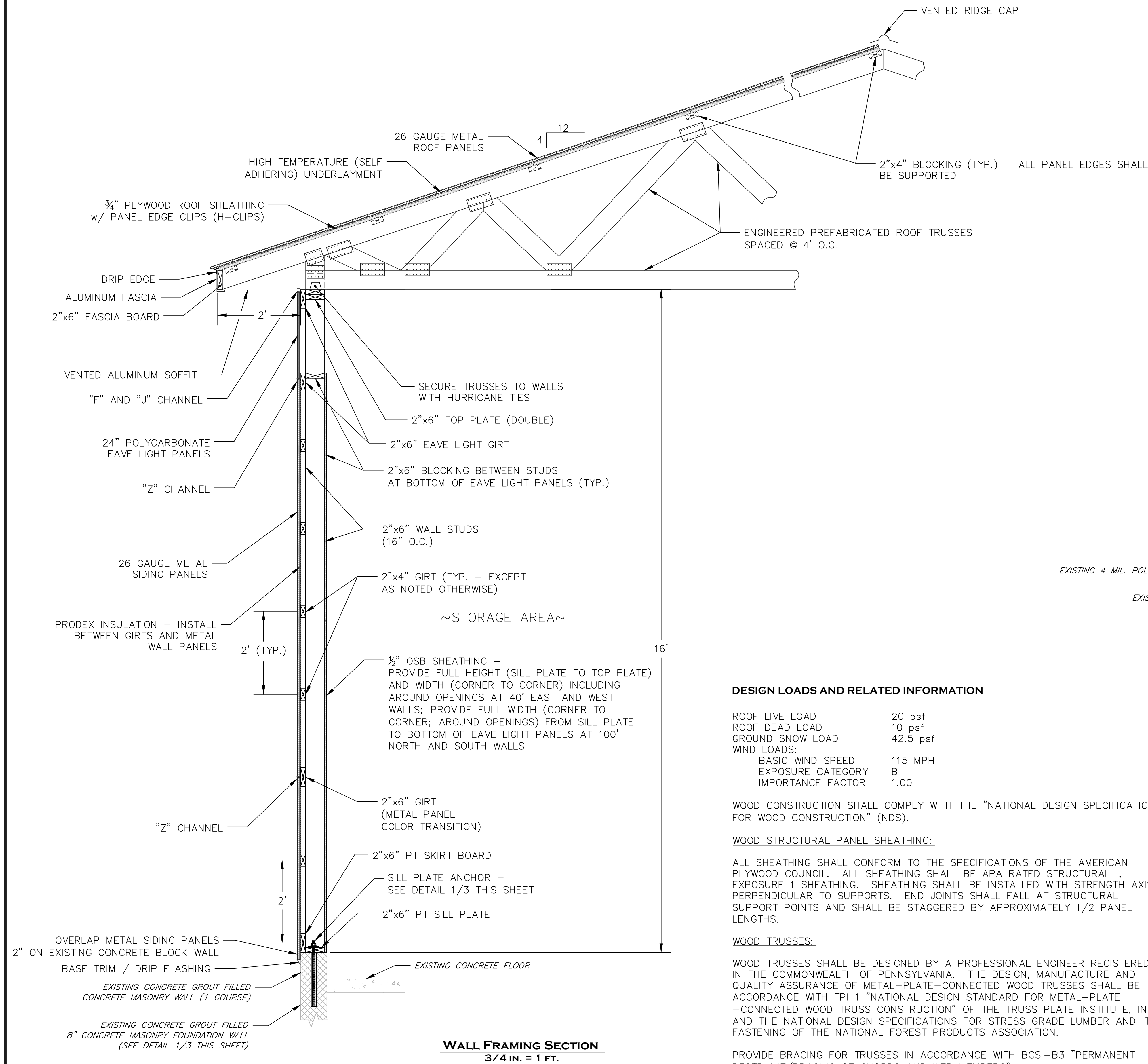


- DETAIL NOTES:**
1. PROVIDE DOWEL ANCHORS WITH STANDARD HOOK.
 2. SPACE ANCHORS AS SHOWN ON EAST WALL ELEVATION VIEW AND "WEST AND EAST WALL" SECTION ON SHEET 4.
 3. INSTALL ANCHORS IN ACCORDANCE WITH MANUFACTURER'S INSTRUCTIONS.
 4. PERIMETER SEAL SHALL BE SIKAFLEX 1a+ ONE-COMPONENT, SOLVENT FREE POLYURETHANE SEALANT AS MANUFACTURED BY SIKA CORPORATION OR APPROVED EQUAL.

- DRAWING NOTES:**
1. UNLESS NOTED OTHERWISE, ALL WORK THIS SHEET SHALL BE THE RESPONSIBILITY OF AND PROVIDED BY THE GENERAL CONTRACTOR (GC).

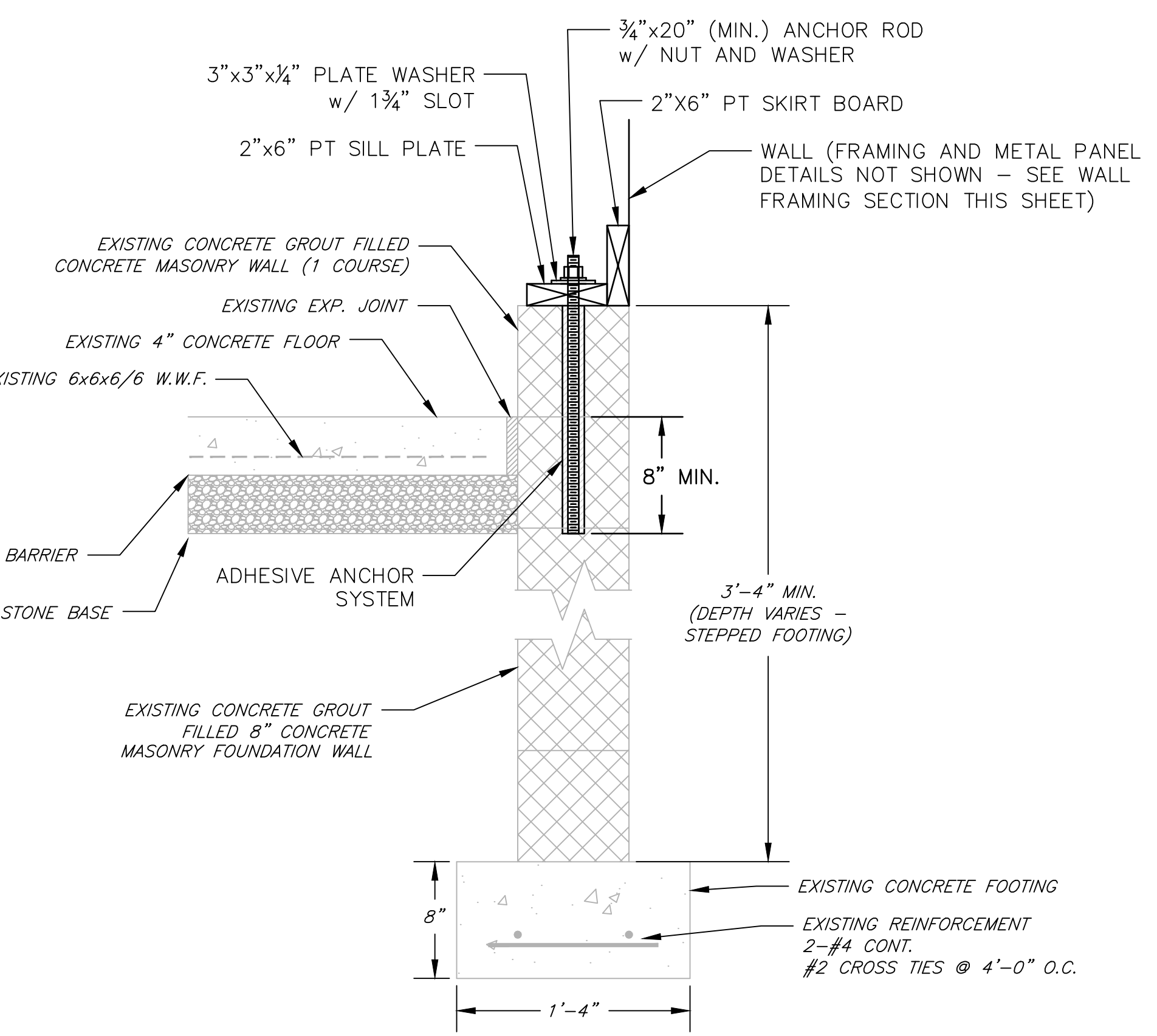


PENNSYLVANIA GAME COMMISSION		
STATE GAME LANDS # 234	LIMERICK TWP.	MONTGOMERY CO.
EQUIPMENT STORAGE BUILDING		
ELEVATIONS		
REVISIONS	PROJECT NO.	PGC-234-19-02
▲	DRAWN BY:	A. KEIRN
▲	DATE:	10/17/19
▲	SHEET NO.	2 OF 5



Mark	Type	W	H	T	Hand	Qty	Remarks
A	1	3'-0"	6'-8"	1-3/4"	RHR	1	Non-Insulated Core w/glass, Panic Bolt
B	2	3'-0"	6'-8"	1-3/4"	LHR	2	Non-Insulated Core w/glass, Panic Bolt
C	3	3'-0"	6'-8"	1-3/4"	LHR	0	Non-Insulated Core w/lockset
D	3	3'-0"	6'-8"	1-3/4"	RH	0	Non-Insulated Core w/passage set
E	2	3'-0"	6'-8"	1-3/4"	LHR	0	Non-Insulated Core w/glass, Panic Bolt

DOOR SCHEDULE



SILL PLATE ANCHOR DETAIL 1/3
1-1/2 IN. = 1 FT.

- DETAIL NOTES:**
- ANCHOR SILL PLATE TO FOUNDATION. ANCHORS SHALL BE SPACED 6 FEET ON CENTER (O.C.) ALONG NORTH AND SOUTH 100' WALLS AND AS SHOWN ON SHEET 2 WEST AND EAST WALL ELEVATION VIEWS AND DETAILS ON SHEET 4. THERE SHALL BE NOT LESS THAN TWO ANCHORS PER WALL SECTION BETWEEN DOOR OPENINGS WITH ONE ANCHOR NOT MORE THAN 12 INCHES OR LESS THAN 4 INCHES FROM EACH END OF EACH WALL SECTION UNLESS NOTED OR SHOWN OTHERWISE.
 - SEE DRAWING NO. 2 FOR EAST WALL ANCHOR DETAILS (CONCRETE CURB WALL).
 - INSTALL ANCHORS IN ACCORDANCE WITH MANUFACTURER'S INSTRUCTIONS. PROVIDE CORROSION RESISTANT COATING FOR ANCHORS, WASHERS, AND HOLD-DOWNS IN CONTACT WITH PRESSURE TREATED (PT) WOOD.
 - EXISTING FOUNDATION / FOOTING INFORMATION BASED ON DRAWINGS FOR "BROODER HOUSES NO. 5 & NO. 6 AT EASTERN GAME FARM" DATED 4/15/74 PREPARED BY PAUL E. KOHLER, JR. ARCHITECT.

DESIGN LOADS AND RELATED INFORMATION

ROOF LIVE LOAD	20 psf
ROOF DEAD LOAD	10 psf
GROUND SNOW LOAD	42.5 psf
WIND LOADS:	
BASIC WIND SPEED	115 MPH
EXPOSURE CATEGORY	B
IMPORTANCE FACTOR	1.00

WOOD CONSTRUCTION SHALL COMPLY WITH THE "NATIONAL DESIGN SPECIFICATION FOR WOOD CONSTRUCTION" (NDS).

WOOD STRUCTURAL PANEL SHEATHING:

ALL SHEATHING SHALL CONFORM TO THE SPECIFICATIONS OF THE AMERICAN PLYWOOD COUNCIL. ALL SHEATHING SHALL BE APA RATED STRUCTURAL I, EXPOSURE 1 SHEATHING. SHEATHING SHALL BE INSTALLED WITH STRENGTH AXIS PERPENDICULAR TO SUPPORTS. END JOINTS SHALL FALL AT STRUCTURAL SUPPORT POINTS AND SHALL BE STAGGERED BY APPROXIMATELY 1/2 PANEL LENGTHS.

WOOD TRUSSES:

WOOD TRUSSES SHALL BE DESIGNED BY A PROFESSIONAL ENGINEER REGISTERED IN THE COMMONWEALTH OF PENNSYLVANIA. THE DESIGN, MANUFACTURE AND QUALITY ASSURANCE OF METAL-PLATE-CONNECTED WOOD TRUSSES SHALL BE IN ACCORDANCE WITH TPI 1 "NATIONAL DESIGN STANDARD FOR METAL-PLATE-CONNECTED WOOD TRUSS CONSTRUCTION" OF THE TRUSS PLATE INSTITUTE, INC. AND THE NATIONAL DESIGN SPECIFICATIONS FOR STRESS GRADE LUMBER AND ITS FASTENING OF THE NATIONAL FOREST PRODUCTS ASSOCIATION.

PROVIDE BRACING FOR TRUSSES IN ACCORDANCE WITH BCSI-B3 "PERMANENT RESTRAINT/BRACING OF CHORDS AND WEB MEMBERS".

METAL ROOF AND WALL PANELS:

INSTALL METAL PANELS IN ACCORDANCE WITH THE MANUFACTURER'S RECOMMENDATIONS FOR THE REQUIRED DESIGN LOADS.

FASTEN METAL PANELS TO ROOF DECK AND WALLS IN ACCORDANCE WITH MANUFACTURER'S INSTRUCTIONS. PROVIDE COATED #14 WOODTITE SCREWS (OR EQUAL) WITH EPDM WASHER SPACED AT 9". FASTENERS SHALL PENETRATE ROOF DECK. MINIMUM EMBEDMENT IN SOLID WOOD (WALL GIRTS, TRUSS, BLOCKING) SHALL BE 1".

- DRAWING NOTES:**
- UNLESS NOTED OTHERWISE, ALL WORK THIS SHEET SHALL BE THE RESPONSIBILITY OF AND PROVIDED BY THE GENERAL CONTRACTOR (GC).
 - PROVIDE MANUFACTURER APPROVED BARRIER MATERIAL BETWEEN METAL PANELS IN CONTACT WITH ACQ PRESSURE TREATED (PT) LUMBER.
 - PROVIDE SEALANT MATERIAL BETWEEN METAL PANEL ENDLAPS/SIDELAPS AND BETWEEN METAL PANELS AND FLASHING IN ACCORDANCE WITH THE METAL PANEL MANUFACTURER'S STANDARD INSTALLATION INSTRUCTIONS AND DETAILS.
 - BUILDING ELEMENTS SHALL BE FASTENED IN ACCORDANCE WITH TABLE 2304.10.1 OF THE 2015 INTERNATIONAL BUILDING CODE.
 - WALL SHEATHING PANELS SHALL BE FASTENED TO ALL INTERIOR WALL STUDS, TOP PLATES, SILL PLATES, AND SUPPORTS WITH 8d (MINIMUM) NAILS AT 6" (MAXIMUM) ON CENTER ALONG ALL PANEL EDGES AND 12" (MAXIMUM) ON CENTER AT INTERMEDIATE SUPPORTS, UNLESS NOTED OTHERWISE.



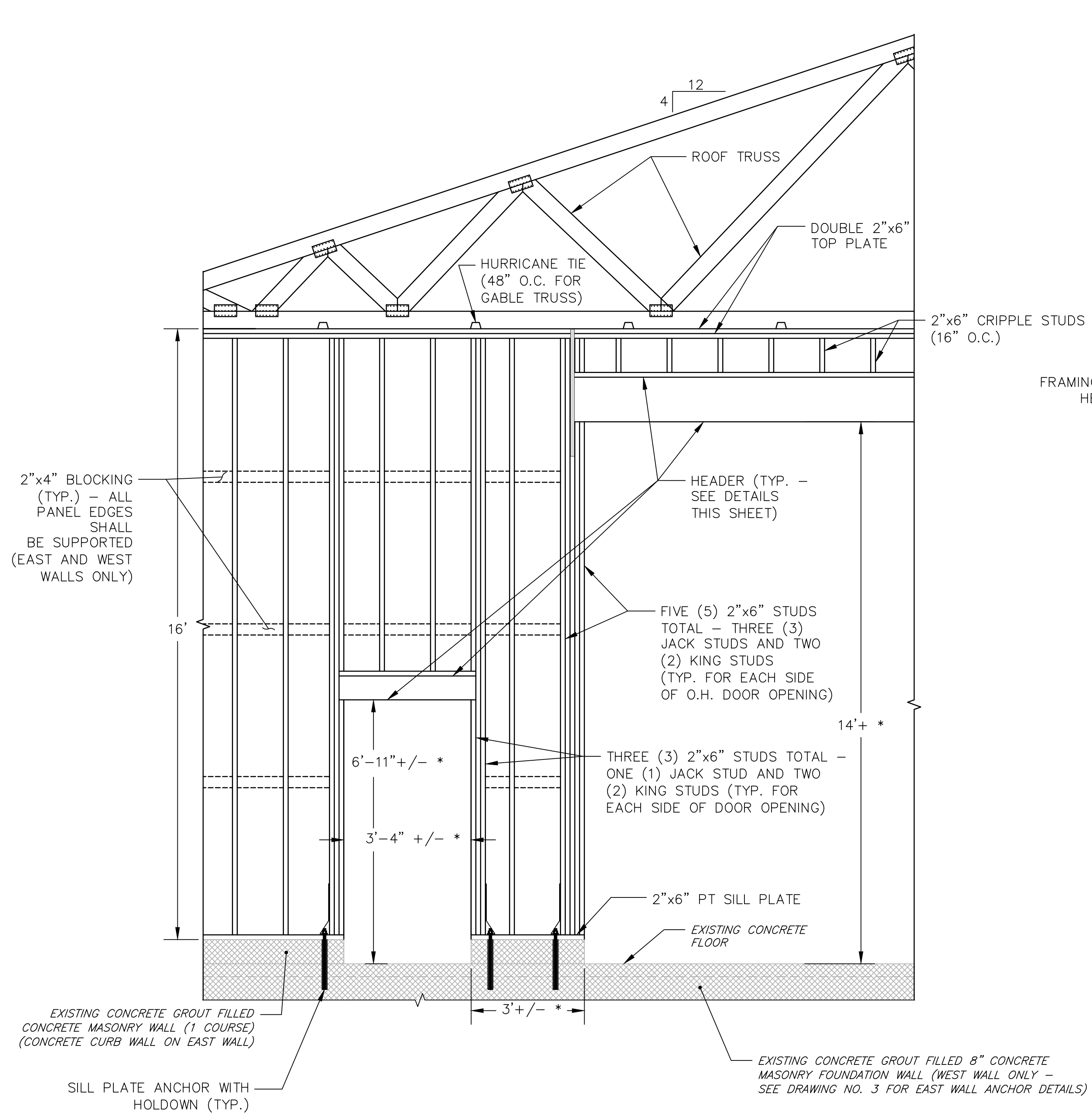
PENNSYLVANIA GAME COMMISSION

STATE GAME LANDS # 254 LIMERICK TWP. MONTGOMERY CO.

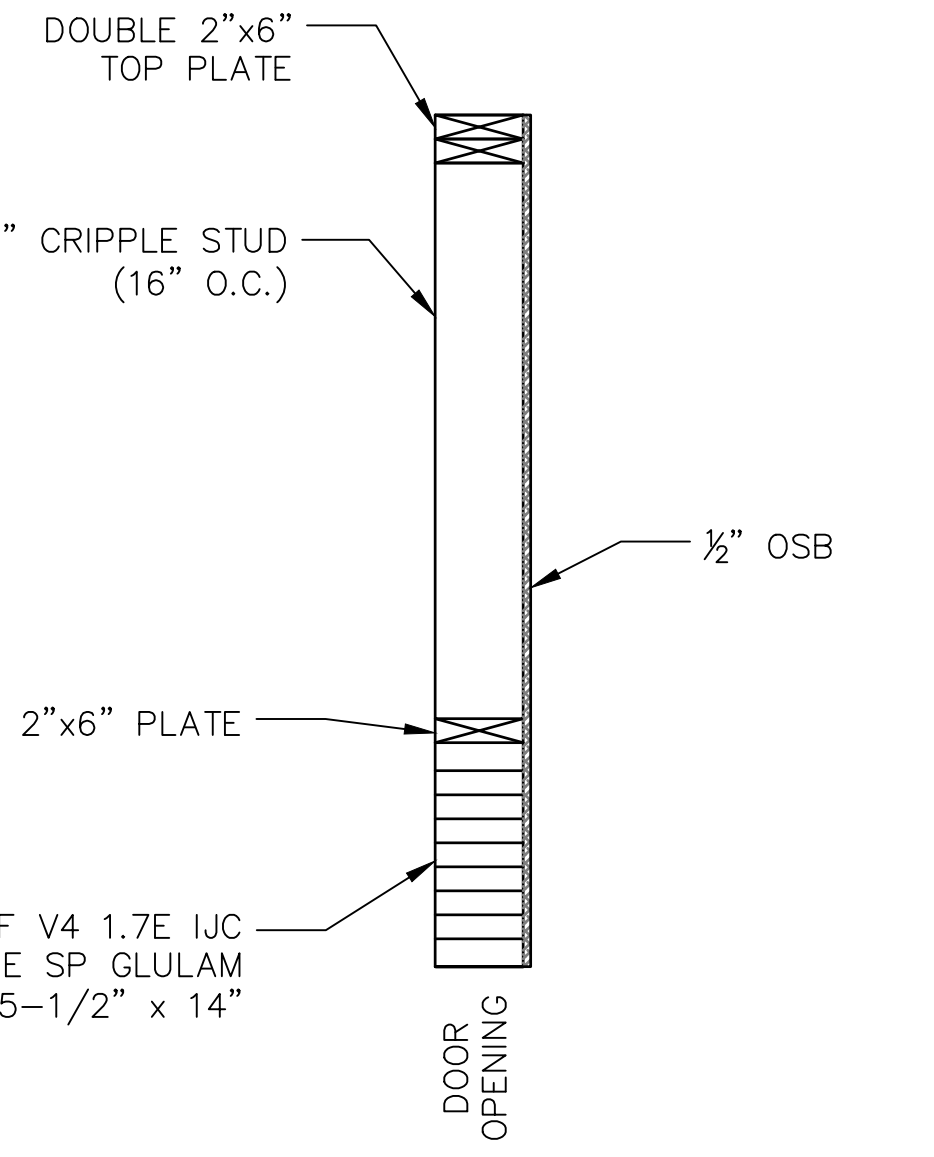
EQUIPMENT STORAGE BUILDING

FRAMING DETAILS

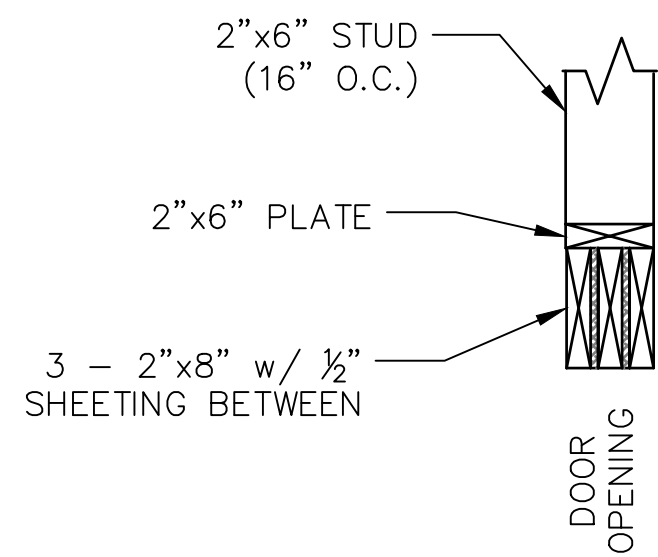
REVISIONS	PROJECT NO.	PGC-254-19-02
	DRAWN BY:	A. KEIRN
	DATE:	10/17/19
	SHEET NO.	3 OF 5



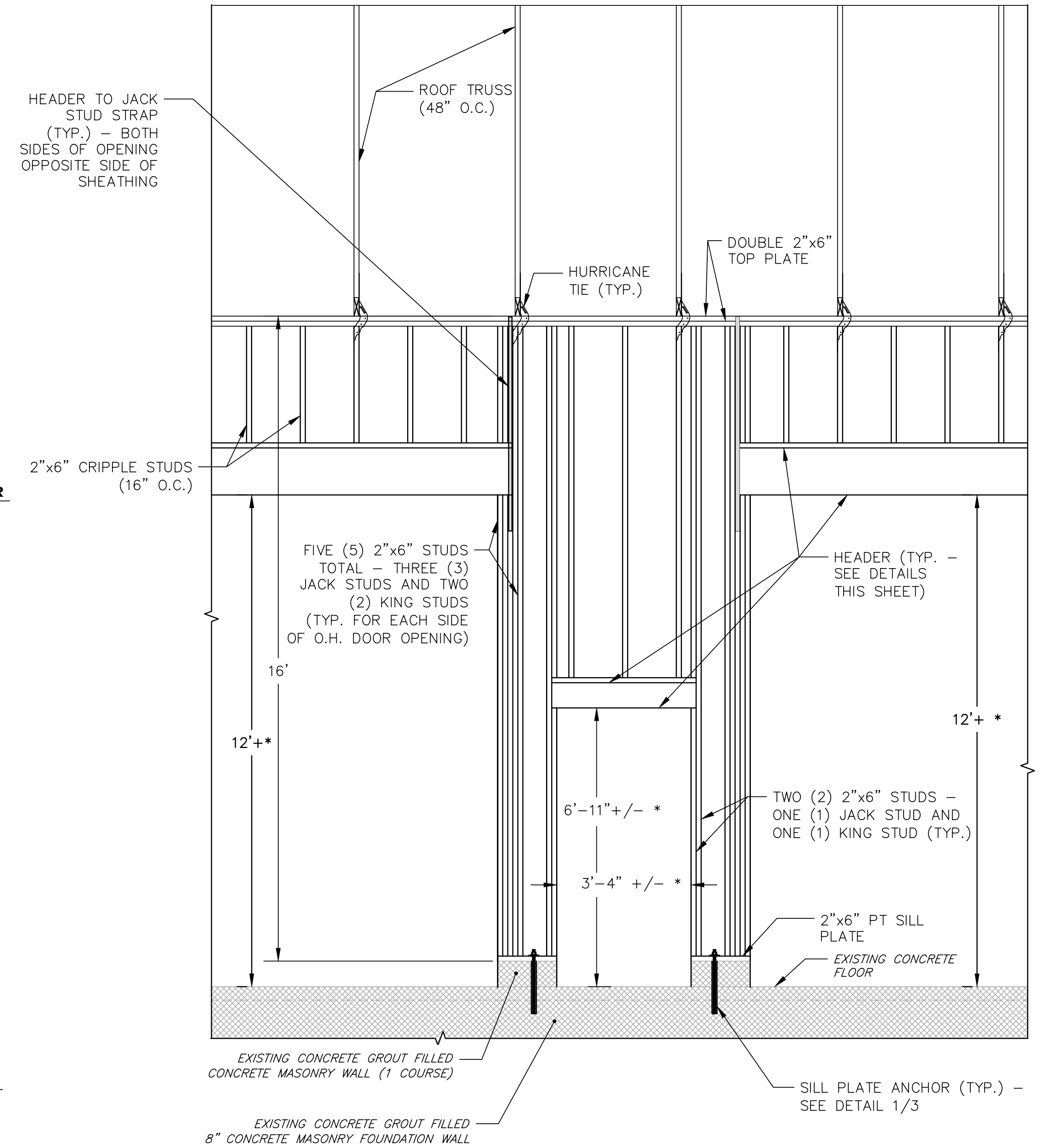
WEST AND EAST WALLS
1/2 IN. = 1 FT.



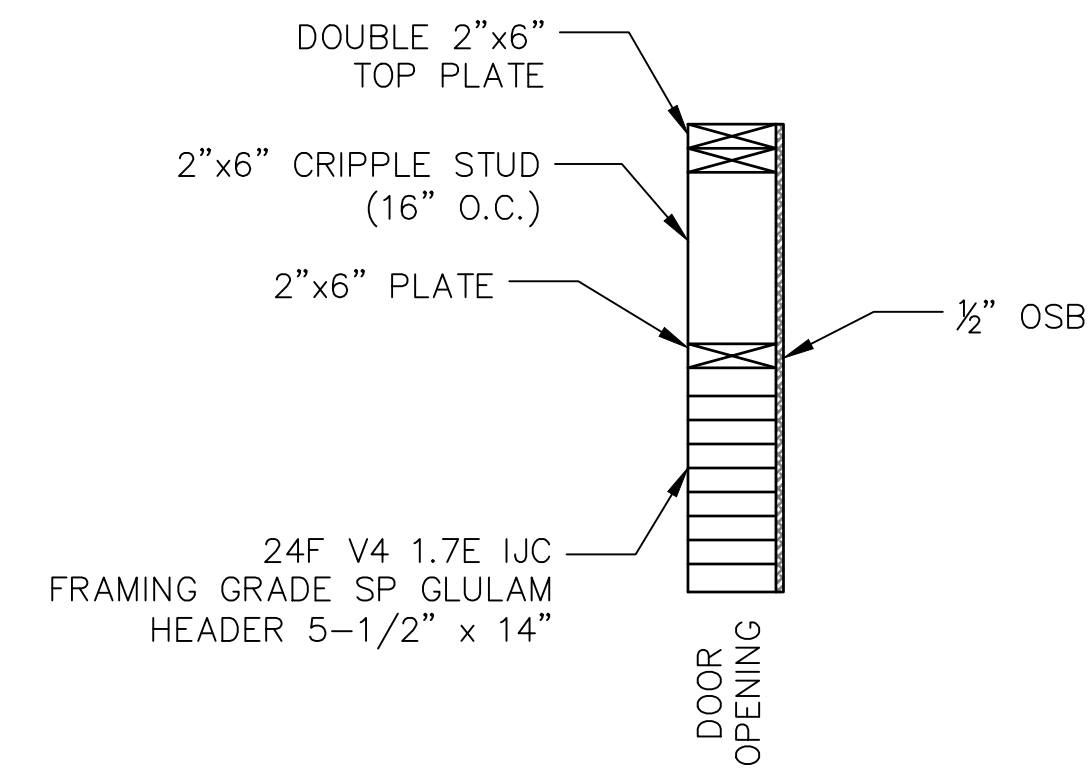
DOOR HEADER SECTION
SOUTH WALL - 12' W x 12' H O.H. DOOR
1 IN. = 1 FT.



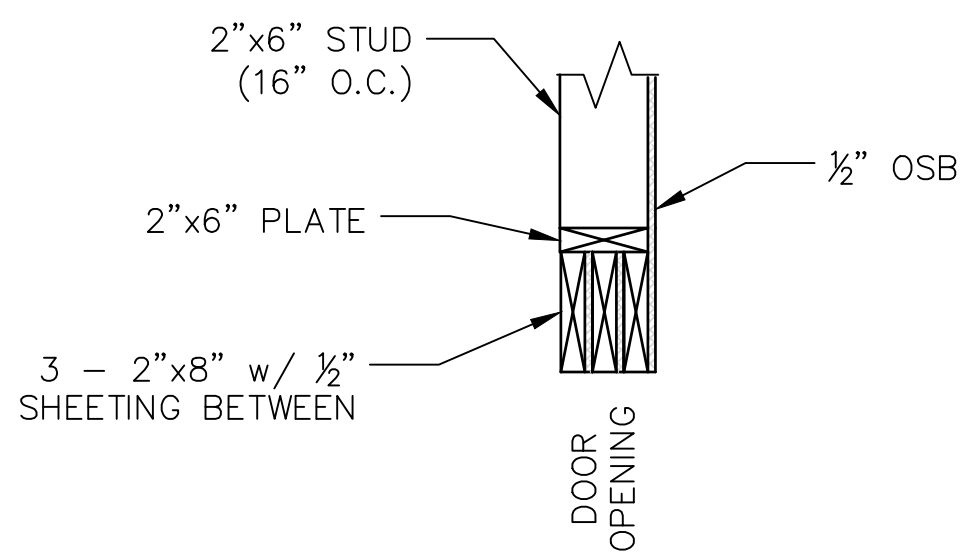
DOOR HEADER SECTION
SOUTH WALL - WALK THROUGH DOOR
1 IN. = 1 FT.



SOUTH WALL
1/2 IN. = 1 FT.



DOOR HEADER SECTION
WEST AND EAST WALLS - 14' W x 14' H O.H. DOOR
1 IN. = 1 FT.



DOOR HEADER SECTION
WEST AND EAST WALLS - WALK THROUGH DOOR
1 IN. = 1 FT.

DOOR FRAMING DETAILS
SCALE AS SHOWN

DETAIL NOTES:

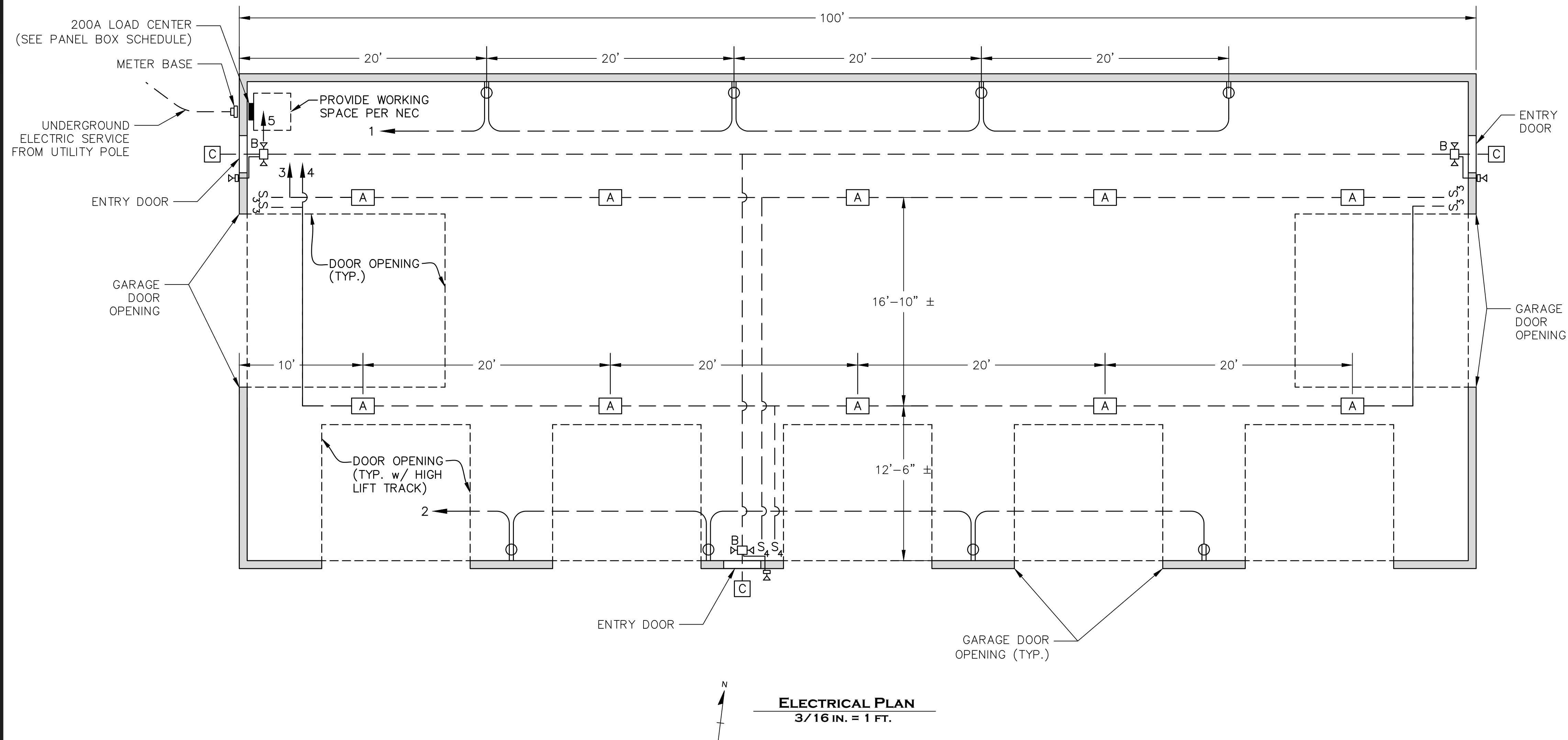
- GIRTS (WALLS) AND ROOF BLOCKING AND SHEATHING NOT SHOWN.
- * = ADJUST DOOR FRAMING AS NEEDED FOR DOOR INSTALLATION IN ACCORDANCE WITH MANUFACTURER'S REQUIREMENTS AND INSTALLATION INSTRUCTIONS.
- PROVIDE DOOR STOPS, JAMBS AND TRIM FOR DOOR OPENINGS IN ACCORDANCE WITH DOOR MANUFACTURER'S REQUIREMENTS AND INSTALLATION INSTRUCTIONS.
- OVERLAP DOUBLE TOP PLATES AT CORNERS. LAP SPLICE TOP PLATES WITH END JOINTS OFFSET.

DRAWING NOTES:

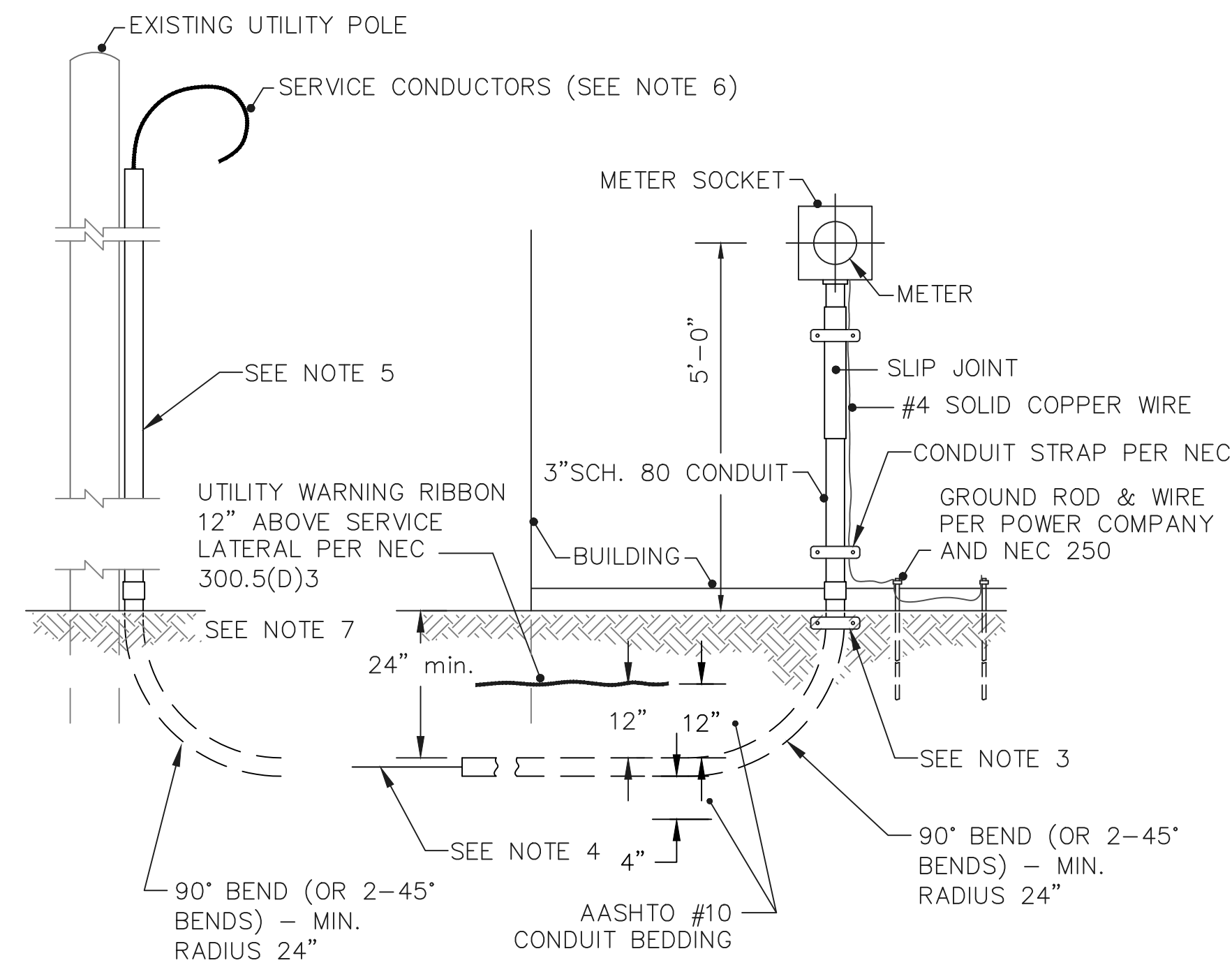
- UNLESS NOTED OTHERWISE, ALL WORK THIS SHEET SHALL BE THE RESPONSIBILITY OF AND PROVIDED BY THE GENERAL CONTRACTOR (GC).



PENNSYLVANIA GAME COMMISSION		
STATE GAME LANDS # 234	LIMERICK TWP.	MONTGOMERY CO.
EQUIPMENT STORAGE BUILDING		
FRAMING DETAILS		
REVISIONS	PROJECT NO.	PAC-234-19-02
▲	DRAWN BY:	A. KEIRN
▲	DATE:	10/17/19
▲	SHEET NO.	4 OF 5



ELECTRICAL PLAN
3/16 IN. = 1 FT.



UNDERGROUND SERVICE LATERAL INSTALLATION DETAIL
NOT TO SCALE

- SERVICE LATERAL DETAIL NOTES:**
1. CONNECT METER SOCKET TO EXTERNAL GROUND ROD IN ACCORDANCE WITH THE NEC AND UTILITY SERVICE PROVIDER REQUIREMENTS.
 2. CONTRACTOR SHALL PROVIDE SERVICE LATERAL METER RISER AS SHOWN. BOND ALL JOINTS.
 3. PROVIDE HEAVY GAUGE 2-HOLE GALVANIZED STRAP JUST BELOW BEND COUPLING. ANCHOR SECURELY TO CONCRETE FOUNDATION WALL USING 3/8" MIN. DIAMETER FASTENERS.
 4. CONTRACTOR SHALL PROVIDE GROUND MOVEMENT PROTECTION PER NEC 300.5(J) TO PREVENT DAMAGE DUE TO SETTLEMENT OR FROST HEAVES. PROVIDE SLIP-JOINT CONDUIT FITTING (RIZZCON SAFETY CLIP OR EQUAL). PROVIDE SUFFICIENT CABLE SLACK OR A SLACK BOX TO ALLOW FOR CABLE MOVEMENT.
 5. PROVIDE METALLIC GUARD FOR CABLE PROTECTION THAT MEETS UTILITY SERVICE PROVIDER REQUIREMENTS. EXTEND GUARD UP POLE 8 FEET MINIMUM FROM FINISHED GROUND SURFACE.
 6. CABLE SHALL BE SECURELY FASTENED TO POLE AND OF SUFFICIENT LENGTH TO PERMIT CONNECTION TO UTILITY SERVICE PROVIDER CONDUCTORS.
 7. BACKFILL CONDUIT TRENCH ABOVE #10 AASHTO CONDUIT BEDDING WITH SUITABLE EXCAVATED MATERIAL. COMPACT BACKFILL AND RESTORE SURFACE WITH SEED AND MULCH.

LOAD CENTER - PANEL BOX SCHEDULE

SERVICE VOLTAGE: 120/240V - 1φ - 3 WIRE
 MAIN SERVICE BREAKER: 200A
 SERVICE FEEDER: 3-#4/0, JACKETED ALUMINUM CONDUCTORS, RATED 600V THHN/THWN @90°C

CIRCUIT NO.	CIRCUIT BREAKER		CIRCUIT LOAD	CONDUCTOR			CONDUIT
	POLES	AMPS		NO.	SIZE	GROUND	
1	1	20	RECEPTACLES - NORTH WALL	2	#12	#12	1/2" SCH. 40 PVC
2	1	20	RECEPTACLES - SOUTH WALL	2	#12	#12	1/2" SCH. 40 PVC
3	1	20	LIGHTS - NORTH ROW	2	#12	#12	1/2" SCH. 40 PVC
4	1	20	LIGHTS - SOUTH ROW	2	#12	#12	1/2" SCH. 40 PVC
5	1	20	EMERGENCY LIGHTS	2	#12	#12	1/2" SCH. 40 PVC
6	1	20	SPARE BREAKER				
7	1	20	SPARE BREAKER				
8-20			SPARE SPACES				

- LEGEND**
- S₃ 3-WAY SWITCH
 - S₄ 4-WAY SWITCH
 - ⊕ DUPLEX RECEPTACLE
 - ⊕ EXIT / EMERGENCY LIGHT
 - ⊕ REMOTE LAMP
 - HOME RUN / CIRCUIT #

LIGHTING SCHEDULE

MARK	QUANTITY	FIXTURE	MODEL
A	10	15.25" x 22" 4 LAMP LED HIGH BAY	LITHONIA IBH 15000LM SD080 MD OZ10 40K 80 CRI
B	3	COMBINATION EXIT AND EMERGENCY LIGHT w/ BATTERIES AND REMOTE HEAD	LITHONIA ECRLEDHO M6 w/ ELA LED T WP M12
C	3	SECURITY MOTION, WALL MOUNT / OUTSIDE UNIT	HEATH ZENITH SL-5630-BZ

- DRAWING NOTES:**
1. UNLESS NOTED OTHERWISE, ALL WORK THIS SHEET SHALL BE THE RESPONSIBILITY OF AND PROVIDED BY THE EC. EC SHALL COORDINATE WORK WITH GC.
 2. ALL ELECTRICAL MATERIALS AND WORK SHALL BE IN ACCORDANCE WITH THE NATIONAL ELECTRIC CODE (NEC).
 3. INSTALL ALL ELECTRICAL FIXTURES AND DEVICES IN ACCORDANCE WITH THE MANUFACTURER'S INSTRUCTIONS.
 4. ELECTRIC UTILITY PROVIDER:
PECO
2301 MARKET STREET
PHILADELPHIA, PA 19103
1-800-494-4000



PENNSYLVANIA GAME COMMISSION

STATE GAME LANDS # 234 LIMERICK TWP. MONTGOMERY CO.
 EQUIPMENT STORAGE BUILDING
 ELECTRICAL PLAN

REVISIONS

PROJECT NO. PGC-234-19-02
 DRAWN BY: A. KEIRN
 DATE: 10/17/19
 SHEET NO. 5 OF 5